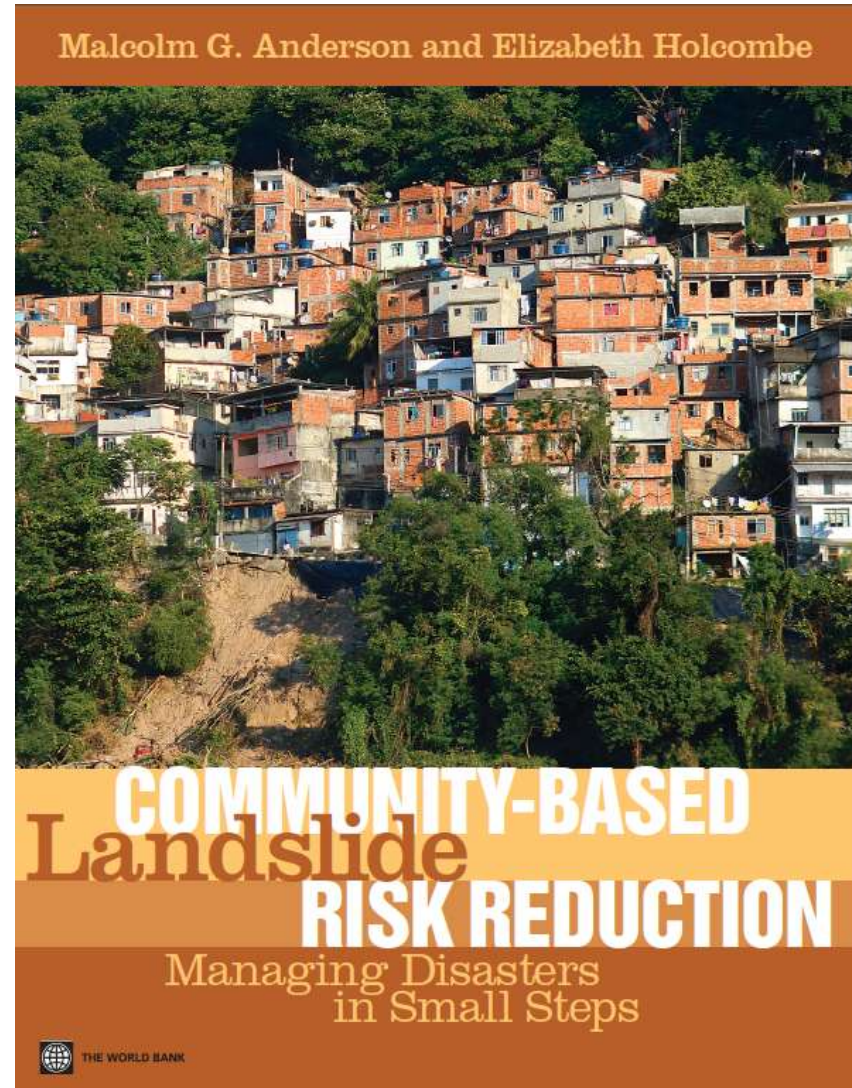
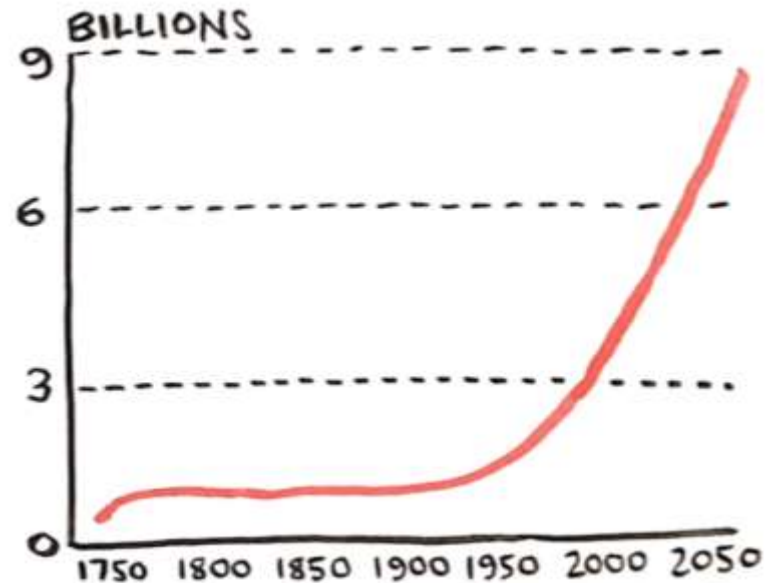


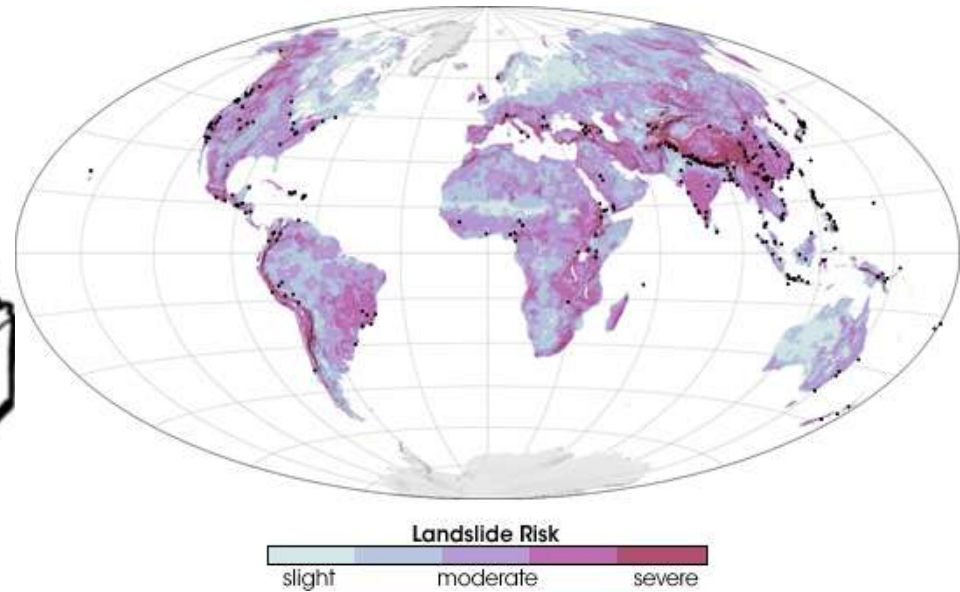
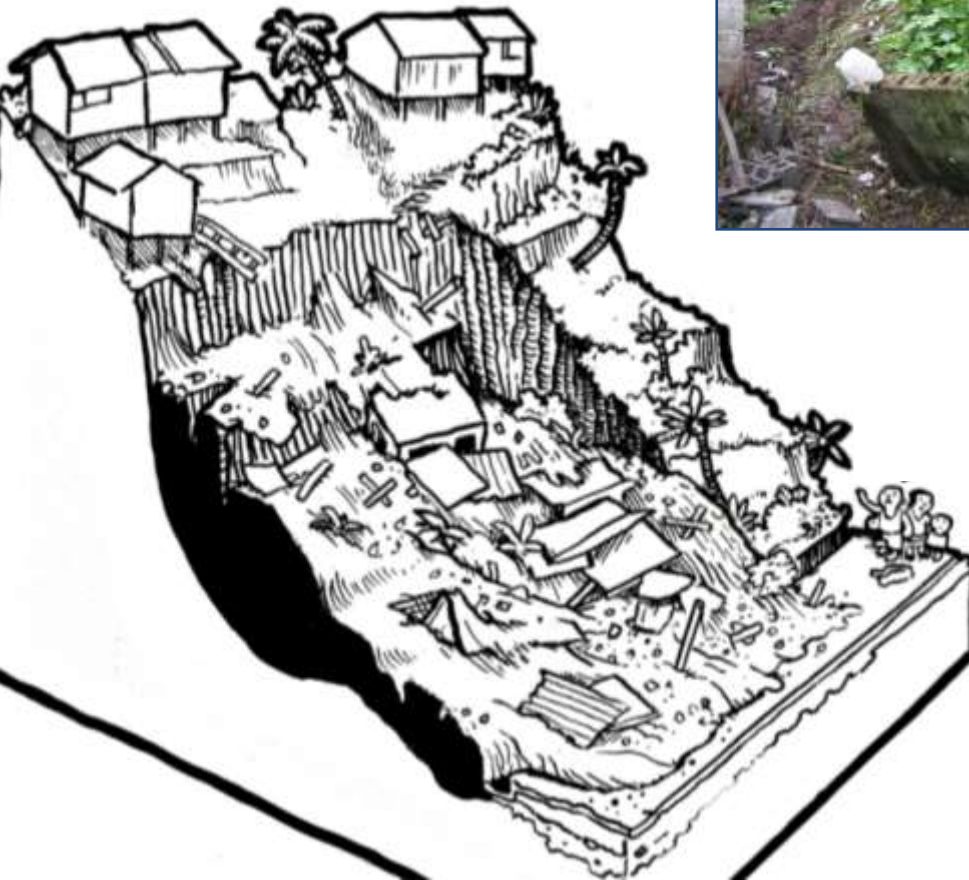
Community-based Landslide Risk Reduction Managing Disasters in Small Steps



Population & urbanisation increasing



... urban landslide risk increasing



...so what is the best policy?



Rachel Kyte, WB vice president for sustainable development (2012):

***“...doing too little
too late”***

Invest to prevent



disaster

Microfinance is a tool that has successfully been utilized to improve livelihood options and reduce poverty. It has hardly been used yet as a tool for reducing risk vulnerability to natural hazards. Leading up to the International Day for Disaster reduction (12 October 2005), the ISDR secretariat will promote dialogue with the microfinance community on the possibility of using these tools to reduce disaster risk and increase community resilience to disasters.

Landslide hazard *can* be reduced

rainfall
soils
steep



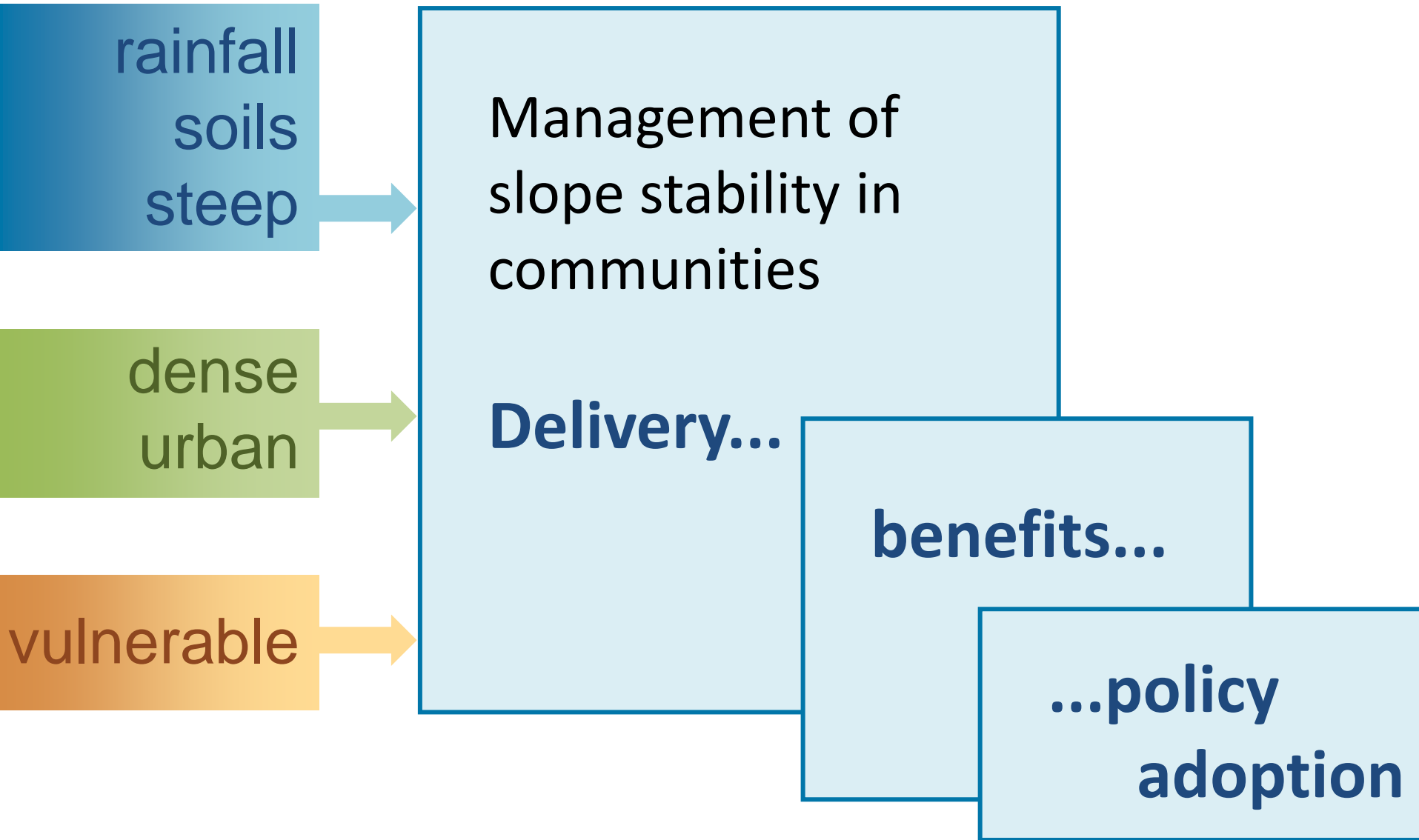
dense
urban



poverty



How to implement MoSSaiC



Delivery: Engage the community

...throughout

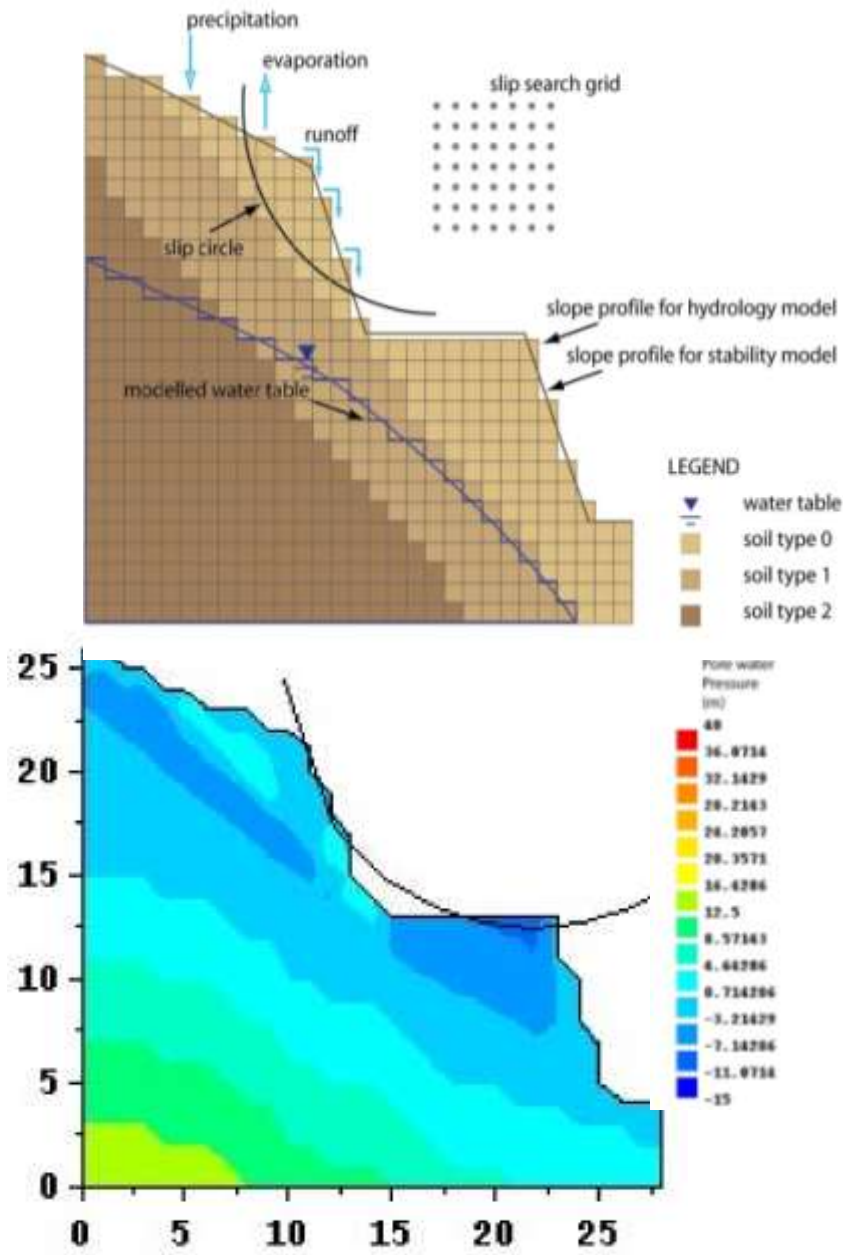


Delivery: discuss landslide causes and solutions with residents



Delivery: Show how the hazard

can be reduced



LOCAL
ENGINEERS

Delivery: use local engineering expertise

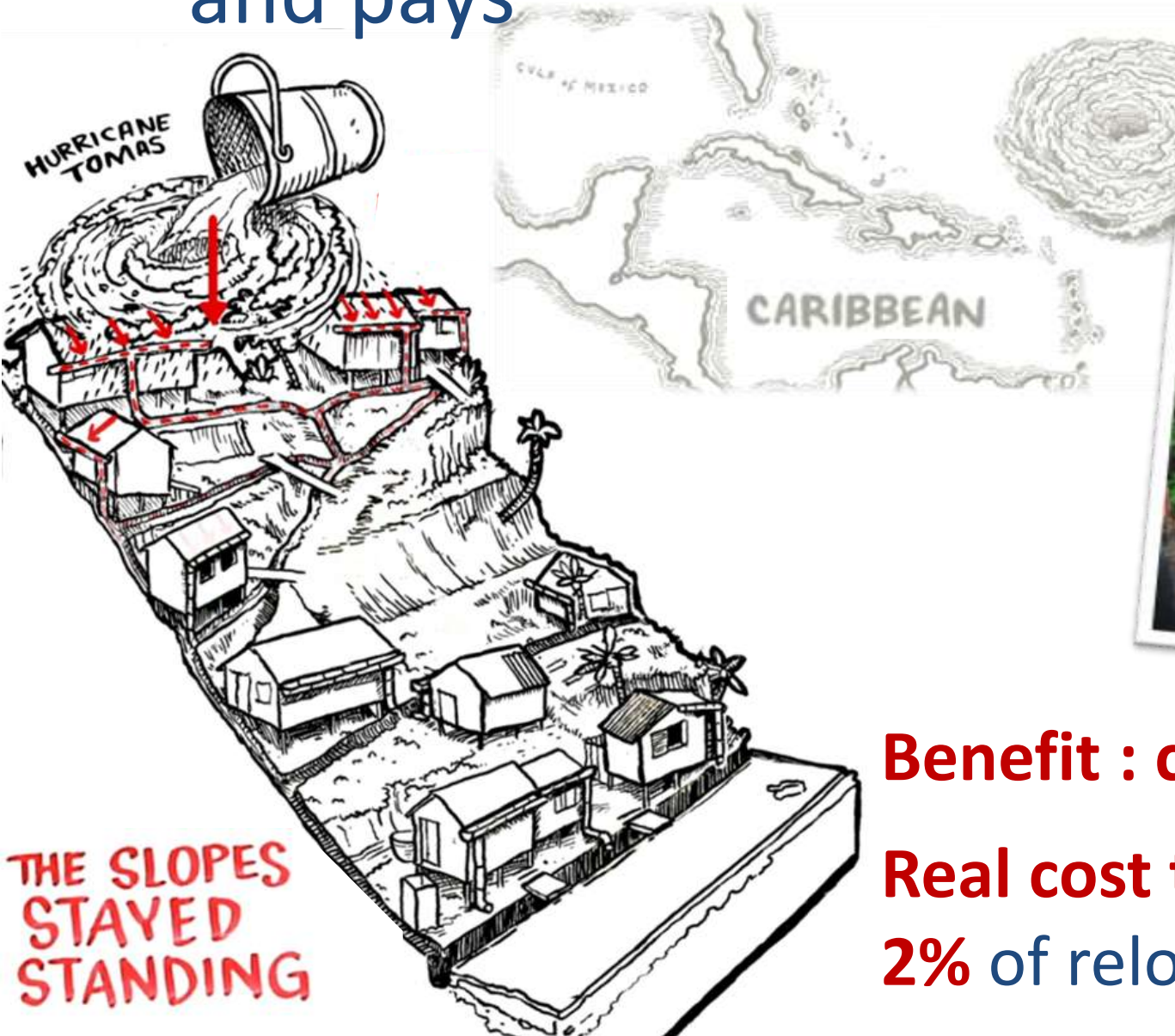
LOCAL
ENGINEER



Delivery: employ community contractors to build drains



Delivery: show evidence it works and pays



Benefit : cost ratio 2.7:1
Real cost to Government
2% of relocation costs

Co-benefits...

Most funds go to community

Community **employment**

Rainwater harvesting



Training for
communities and
local experts

Health benefits

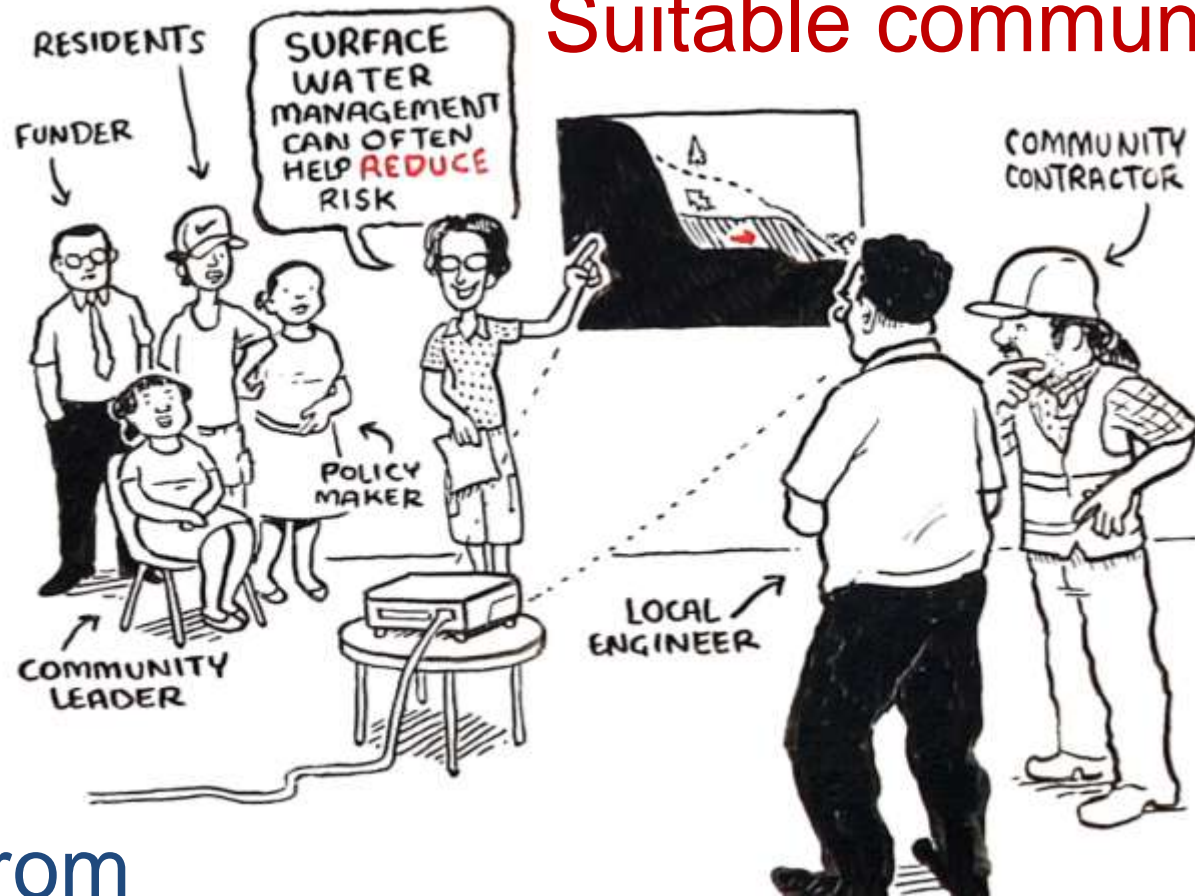
Links science and
social science **policy**



Policy adoption requires

Local
demand &
champions

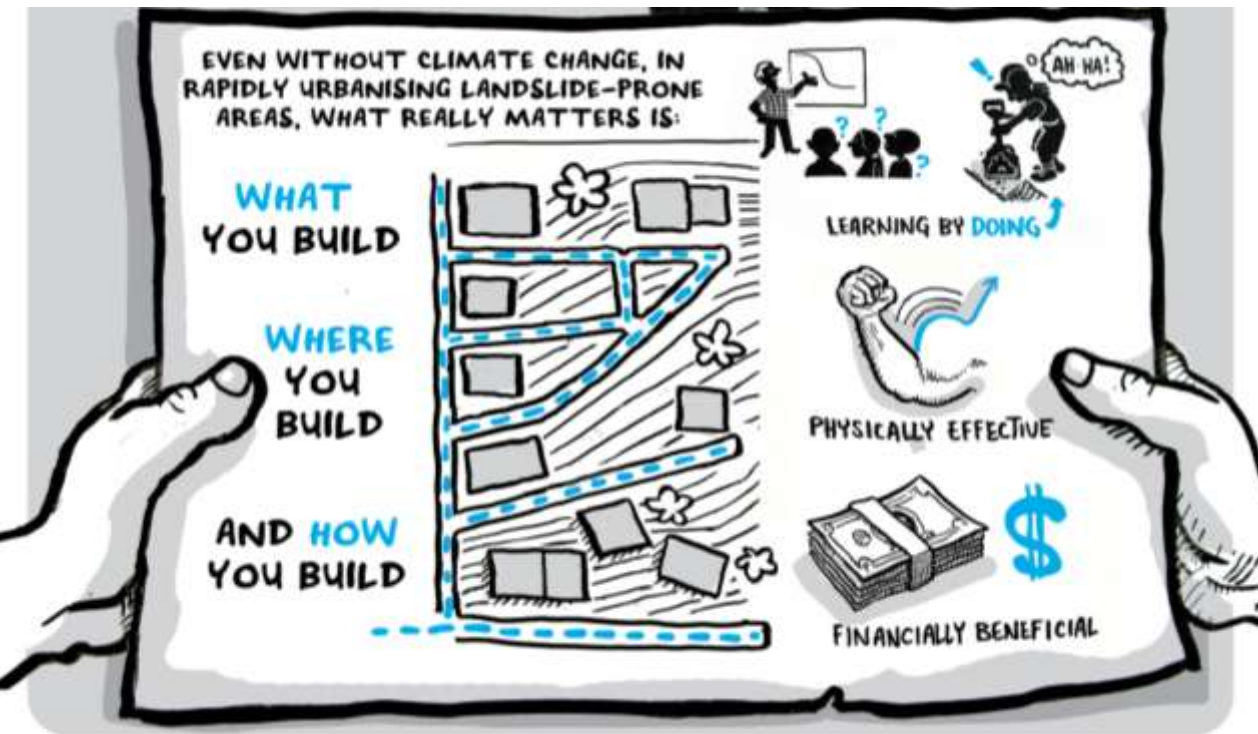
Suitable communities



Support from
Government

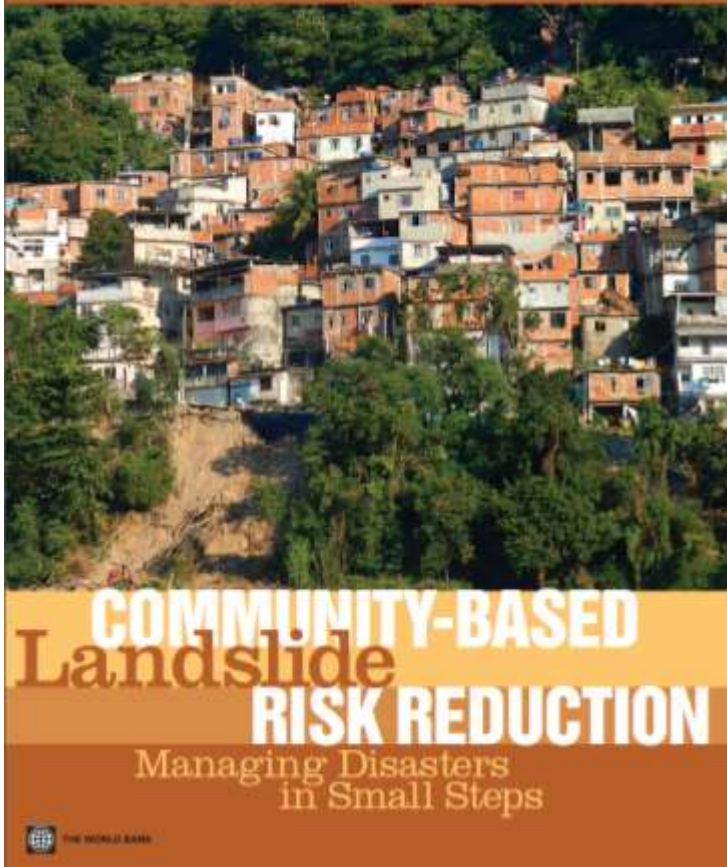
Local implementing agency

Book is a flexible blueprint



... how to deliver MoSSaiC

Malcolm G. Anderson and Elizabeth Holcombe



Policy-makers approve the blueprint

Local teams capture local knowledge

Communities are the classroom

"WHEN IT USED TO RAIN WE COULDN'T SLEEP AT NIGHT - NOW WE CAN."



Prof. Malcolm G Anderson *PhD DSc CEng FICE A.M.ASCE*

Dr Liz Holcombe *MSci PhD*

mossaic@emailplus.org <https://openknowledge.worldbank.org/handle/10986/12239>